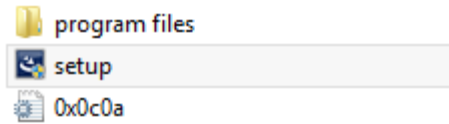


INSTALLING EASITEACH TEXT TO SPEECH (English – Rachel)

1. #cd drive : \Content\Voices Installer (folder)

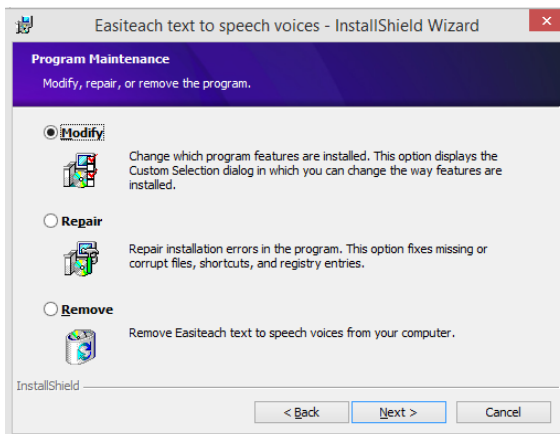
Click **Setup.exe**



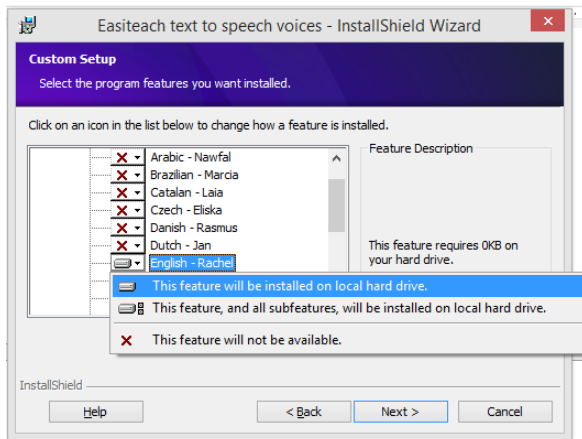
2. Easiteach text to speech dialog box., click **Next**



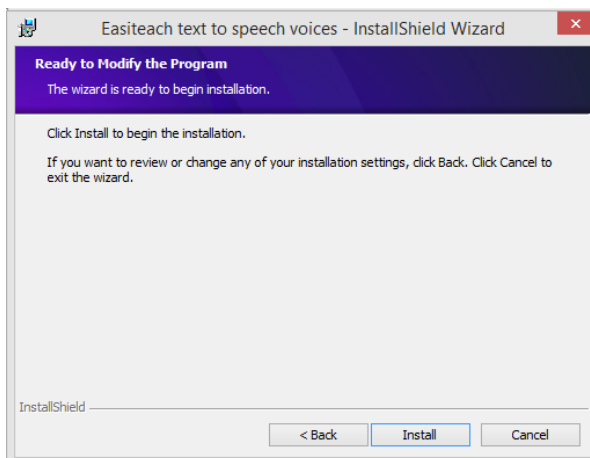
3. Choose **Modify**



- Click on **English-Rachel** and choose “This feature will be installed on local drive.” Then click “Next”



- Click **Install**



- Finish the installation

